

Data linkage provides new insight into MA employers

Skills Development Scotland Modern Apprentice (MA) employer records have been matched to ONS data* for the period 2010-2019, providing new information about the **profile of MA employers** and the relationship between **MA employment and productivity**.

This set of infographics supports the [Profile of Modern Apprenticeship Employers report](#), which can also be found on the Publications and Statistics area of the Skills Development Scotland website.

*This work was produced using statistical data from ONS. The use of the ONS statistical data in this work does not imply the endorsement of the ONS in relation to the interpretation or analysis of the statistical data. This work uses research data sets which may not exactly reproduce national statistics aggregates.

1 Over half of all MA employers were in 3 of Scotland's largest employing industries



26%

Construction



15%

Wholesale, Retail and Repair of Motor Vehicles and Motorcycles



Around half of the MA employers in this industry were in 'Repair of motor vehicles and motorcycles'.



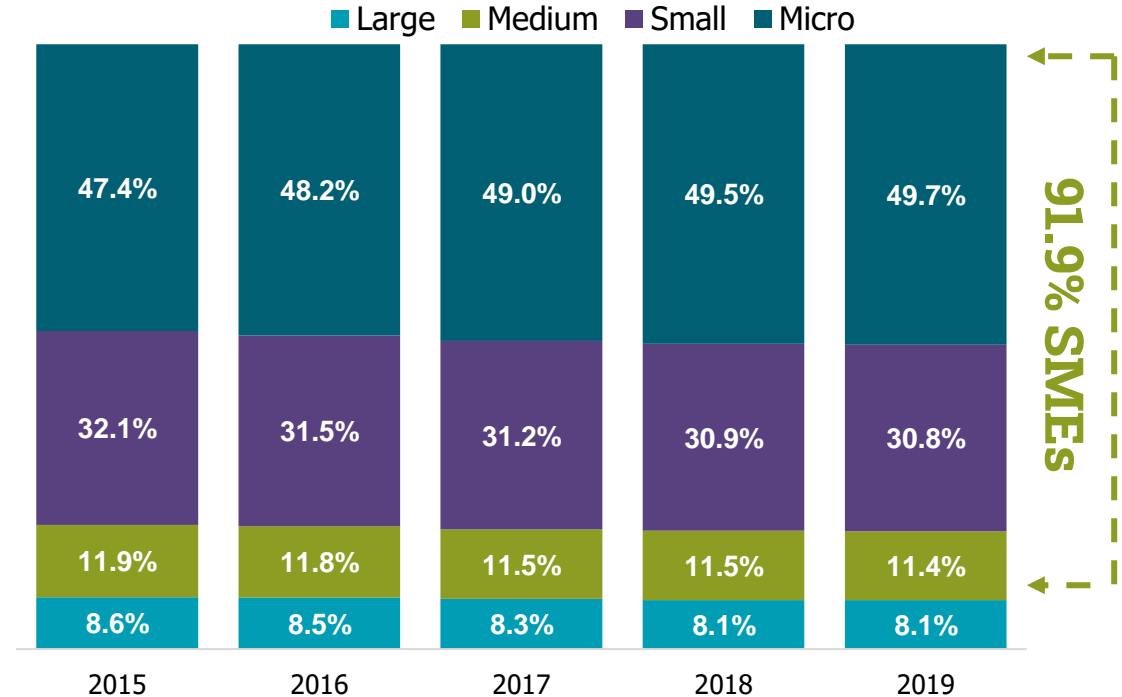
10%

Manufacturing

2 Around 9 in 10 MA employers were Small and Medium sized Enterprises (SMEs)

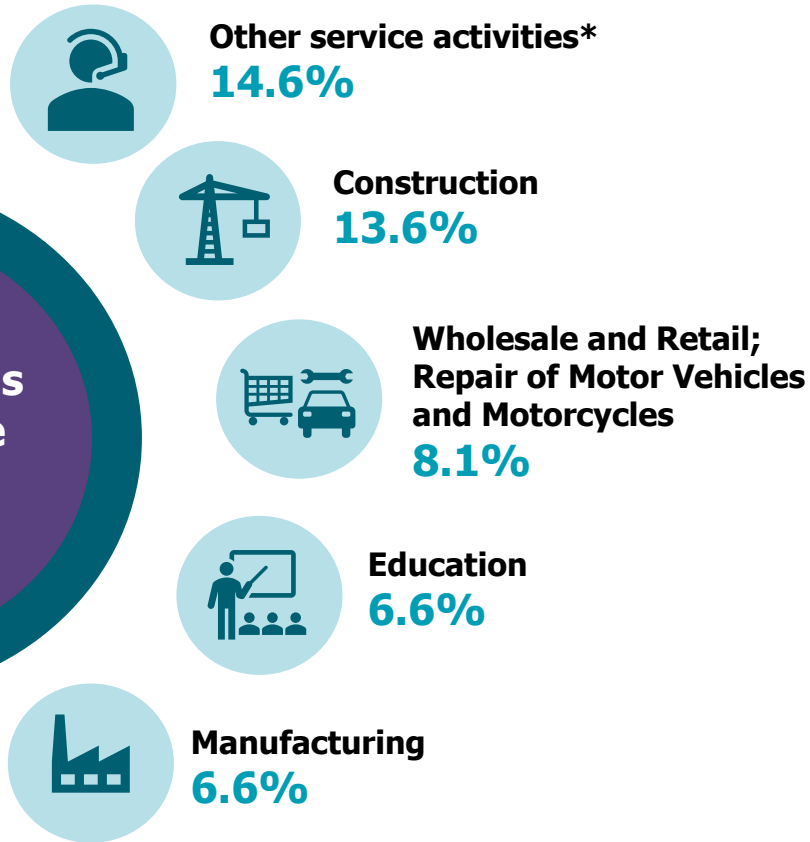
Size of MA employers

*Based on a sample of employers with MA starts in 2010-2019, n=19180 (min 14,938, max 17,237 with employment data available in the IDBR)

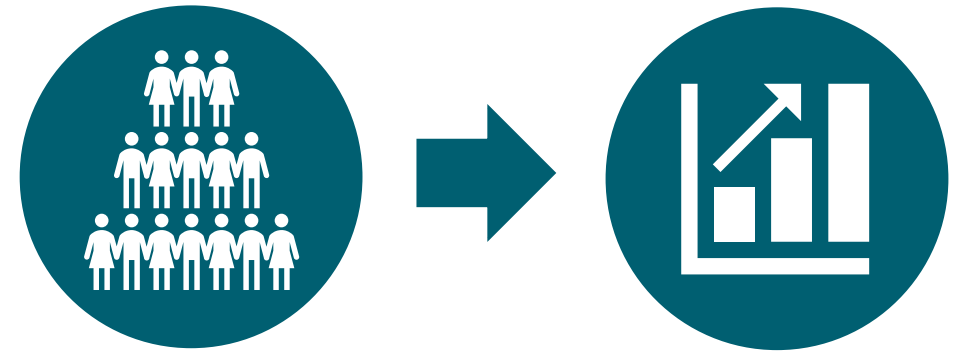


SMEs make up a sizeable part of Scotland's business base - 99.3% of businesses in Scotland were SMEs.

3 MAs accounted for 1 in 7 employees among construction employers that hire MAs



4 MAs play an important role in enterprise productivity



Employers with a higher proportion of MAs in-training relative to their total workforce **tended to be more productive**

Find out more...
More detail on this research including the methodology and additional findings is available in the [full report: 'Profile of Modern Apprenticeship Employers'](#)
Get in touch:
impact@sds.co.uk

**MAs as a percentage of the workforce was also high in other service activities. This grouping encompasses multiple sectors including Activities of membership organisations, Repair of computers and personal and household goods; and Other personal service activities.*